

New XCAL-Auto Unattended & Remote Network Quality Monitoring

Server-based Auto Data Collection System

New XCAL-Auto is a server-based, integrated measurement solution that enables operators to make plan and monitor real-time measurement data. Operators can perform large-scale wireless measurements using various remote test unites (X-Remote Series; Smartphone based apps, PC based XCAL Series, Various kinds of scanners and Benchmarking solutions). Operators also can validate the measurement result via report on the web within an hour after the measurement finished. New XCAL-Auto solution can reduce cost effectively across all measurements from wireless network rollout to optimization.

Use New XCAL-Auto to

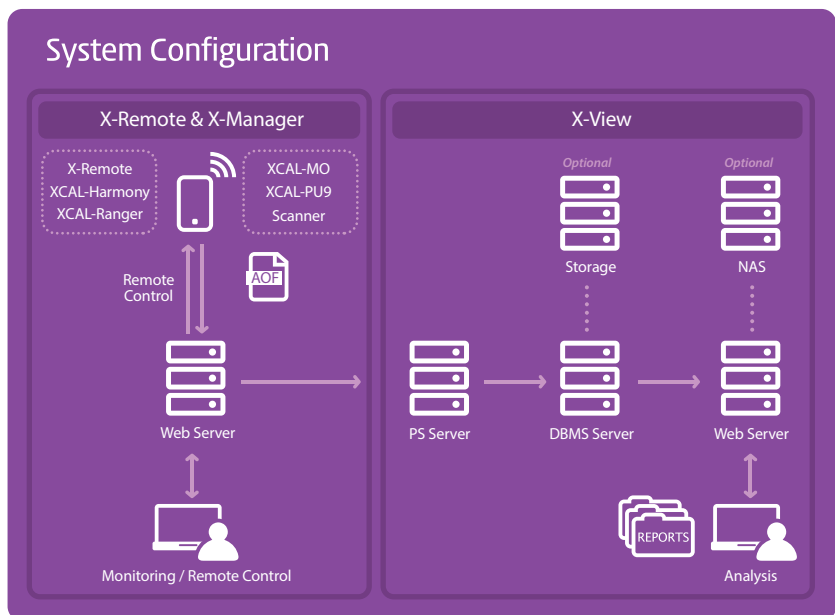
- Perform various voice & data service tests
- Manage field testing via remote control
- Monitor network KPIs, RF Parameters of multi devices in real-time
- Perform automatic call test via sending the test schedule and drive route
- Detect and trouble shoot call performance issues, coverage limitations and capacity bottlenecks in real time
- Perform In-Building testing & analysis

Benefits

- **Flexibility**
Measurement in various types depending on the purpose you want, such as rollout or optimization
- **Expandability**
Server-based remote control allows you to extend your measurement range without having to worry about area and time at the same time
- **Usability**
Simple GUI and easy operation make it easy to use for non-professional users
- **Accuracy**
Check Measurement route, call statistics and KPI in real time to find out abnormal area or necessary of re-measurement, change scenario and take immediate field action
- **Economics**
Easy to cover large are with simple method, Cost saving by easy enough to use anyone without additional training

New Updates

- Add 5G Samsung and Qualcomm on X-Manager and X-View
 - 5G Monitoring Page (including Cell Throughput)
 - Analysis 5G on Summary View, Call Table, Processed Data Management
- Support PCTEL Scanner
- Add Multi Client Viewer for Massive Call test



Features

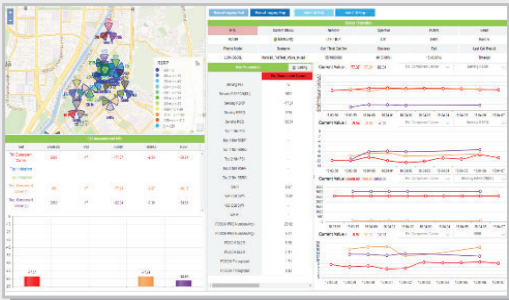
Monitoring	<ul style="list-style-type: none"> - Measurement device condition and location - Monitoring main KPIs in real-time - Communication history data management
Remote Control	<ul style="list-style-type: none"> - Remote monitoring and control - Management test devices (Alarm Event)
Work Order & Measurement Plan	<ul style="list-style-type: none"> - Measurement schedule management - Scenario (Autocall setting) editing / transmission - Logmask (measurement list) editing / transmission - Drive test route editing / transmission
Centralized Management	<ul style="list-style-type: none"> - Test scenario generation and management - Management of test version - Management of alarm setting
Simple Analysis	<ul style="list-style-type: none"> - Verification test results on the web - Support various statistics, coverage and event
Report	<ul style="list-style-type: none"> - Automatic report generation with preset format - Support KPIs and call statistics for easy analysis
Installation	<ul style="list-style-type: none"> - Non installation by web base - Support open street map

New XCAL-Auto Unattended & Remote Network Quality Monitoring

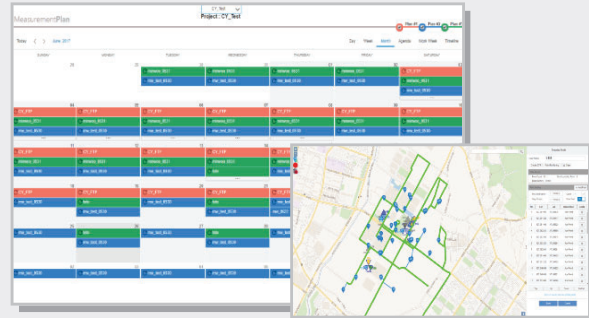
Specification (Client 100EA)

Products	Description	Specification	Quantity	Redundancy
PS Server	Preprocessing Server (for converter)	- CPU: Intel Xeon E5-2697V2 2 CPU / 24 Core - Memory : 32GB - HDD: 300GB x 6 (RAID 10) - NIC: 10Gbps 2P, 1Gbps 2P (Bonding Interface) - OS: Windows Server 2012 R2	1pcs	Possible to process within 8 hrs
DBMS Server Web Server	DBMS Server (Postgre SQL) Web Server (IIS)	- CPU: Intel Xeon E7-4830V2 4 CPU / 40 Core - Memory: 256GB - HDD: 300GB x 6 (RAID 10) - NIC: 10Gbps 2P, 1Gbps 2P (Bonding Interface) - OS: Windows Server 2012 R2	1pcs	DBMS & Web Server
Storage	Storage for DBMS	SAN Switch 5TB (RAID Configuration)	1pcs	Optional
NAS	Storage for log file	10 Gbps NIC Minimum 10TB (RAID Configuration)	1pcs	Optional

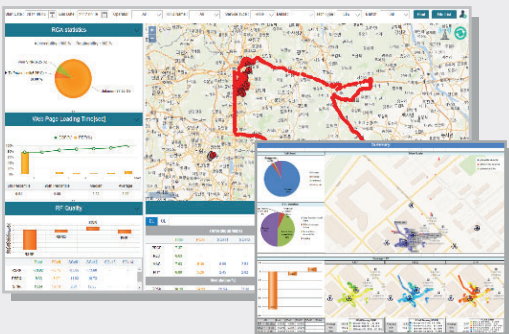
* Based on X-Remote 100EA, conduct test 8 hours per day and save log file for a year.



[Monitoring]



[Work Order]



[Outdoor Test]



[In-Building Test]

Regional offices

Hong Kong (Head Office)
Accuver APAC
Tel: +852 2210 7004
Fax: +852 2210 7017
Enquiries:
sales.apac@accuver.com
support.apac@accuver.com

United Kingdom
Accuver EMEA
Tel: +44 20 8863 1118
Fax: +44 20 8863 1688
Enquiries:
sales.emea@accuver.com
support.emea@accuver.com
http://support2.accuver-emea.com

Poland
Accuver Poland
Tel: +48 22 3702518
Enquiries:
sales.emea@accuver.com
support.emea@accuver.com
http://support2.accuver-emea.com

Japan
Accuver Japan
Tel: +81-3-6430-2580
Fax: +81-3-6430-2589
Enquiries:
sales@accuver.jp
support_aj_1@accuver.com
http://www.accuver.jp/login.html

Korea
Innowireless Co Ltd
Tel: +82 31 788 1700
Fax: +82 31 705 0712
Enquiries:
sales@accuver.com

USA
Accuver Americas
Tel: +1 469 241 6100
Fax: +1 469 241 6199
Enquiries:
sales.usa@accuver.com
support.usa@accuver.com
http://help.usa.accuver.com/helpdesk